



DUBAI HILLS
ESTATE

GOLFWILLE

FLOOR PLANS

EMAAR

DUBAI HILLS ESTATE

GOLFOVILLE

BLOCK A | 1 BEDROOM

UNIT 6 | LEVEL 1, 2 - 7, 8 - 13

SUITE AREA	476.63 Sq.ft.	44.28 Sq.m.
BALCONY AREA	28.09 Sq.ft.	2.61 Sq.m.
TOTAL AREA	504.72 Sq.ft.	46.89 Sq.m.

UNIT 7, 8, 9 | LEVEL 1, 2 - 7, 8 - 13

SUITE AREA	472.75 Sq.ft.	43.92 Sq.m.
BALCONY AREA	32.72 Sq.ft.	3.04 Sq.m.
TOTAL AREA	505.47 Sq.m.	46.96 Sq.ft.

UNIT 10 | LEVEL 1, 2 - 7, 8 - 13

SUITE AREA	472.43 Sq.ft.	43.89 Sq.m.
BALCONY AREA	32.72 Sq.ft.	3.04 Sq.m.
TOTAL AREA	505.15 Sq.ft.	46.93 Sq.m.

UNIT 13, 14 | LEVEL 1 UNIT 14, 15, 16, 17 | LEVEL 2 - 7

SUITE AREA	464.57 Sq.ft.	43.16 Sq.m.
BALCONY AREA	31.32 Sq.ft.	2.91 Sq.m.
TOTAL AREA	495.89 Sq.ft.	46.07 Sq.m.

UNIT 15, 16 | LEVEL 1

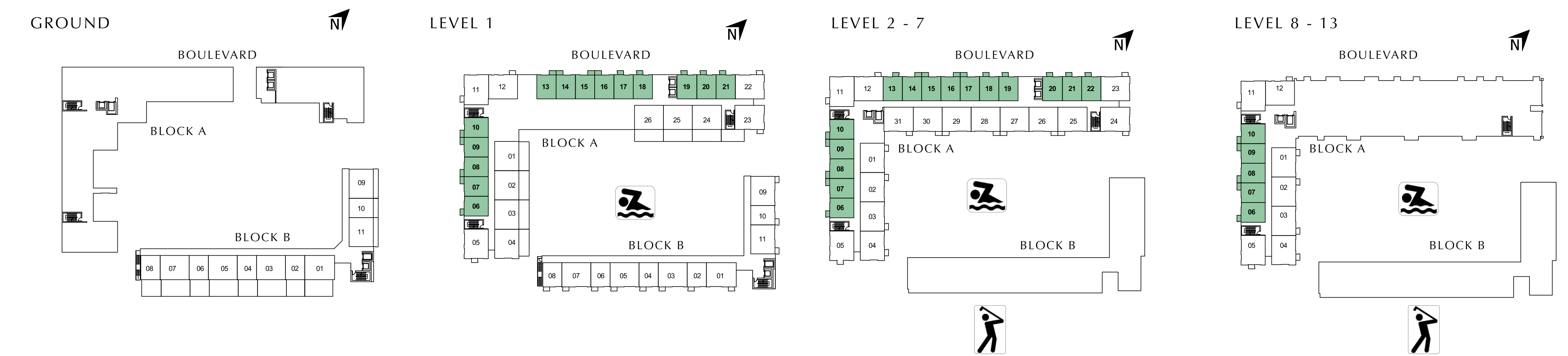
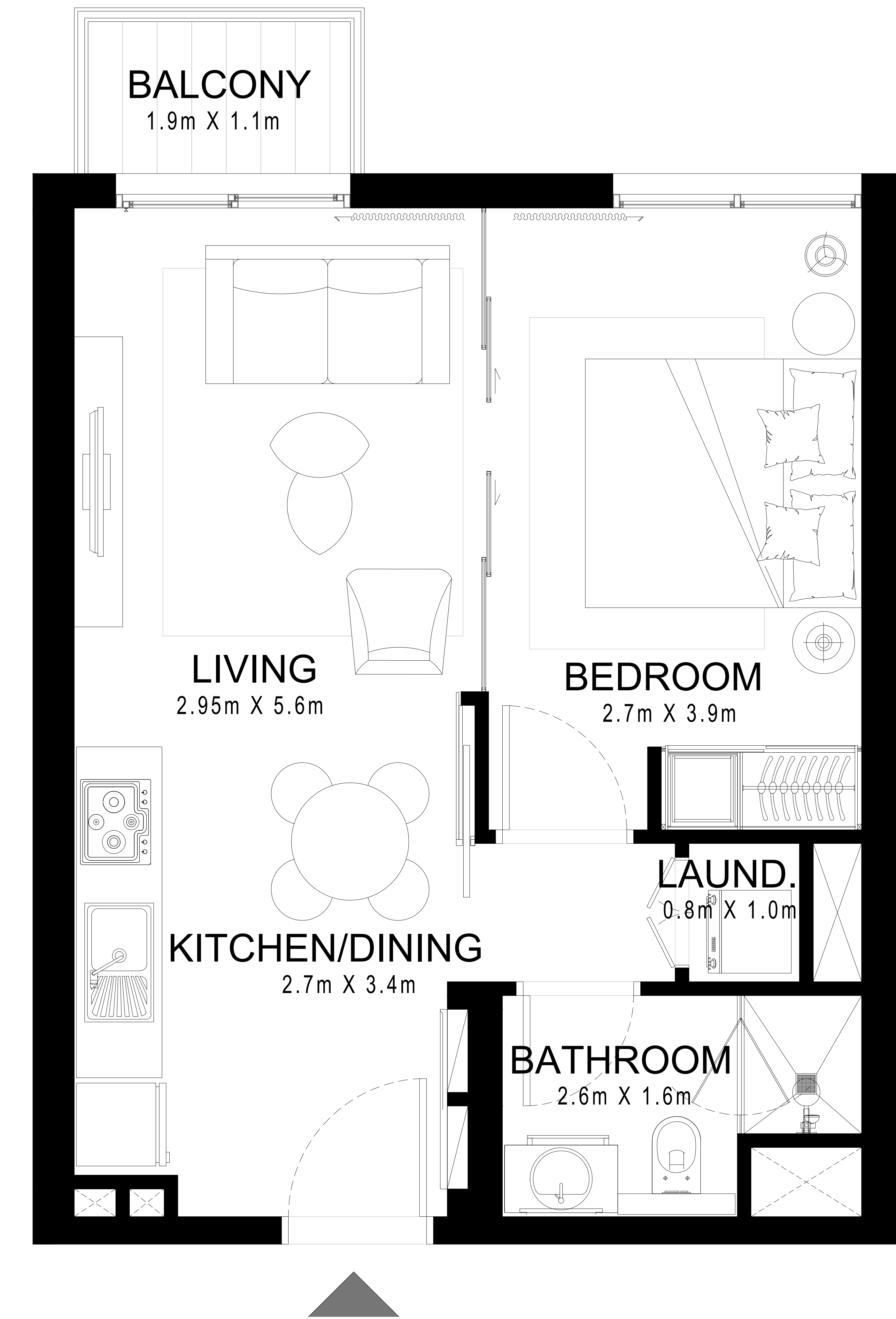
SUITE AREA	464.89 Sq.ft.	43.19 Sq.m.
BALCONY AREA	31.32 Sq.ft.	2.91 Sq.m.
TOTAL AREA	496.21 Sq.ft.	46.10 Sq.m.

UNIT 17, 18, 20, 21 | LEVEL 1 UNIT 13, 18, 19, 21, 22 | LEVEL 2 - 7

SUITE AREA	465.86 Sq.ft.	43.28 Sq.m.
BALCONY AREA	28.09 Sq.ft.	2.61 Sq.m.
TOTAL AREA	493.95 Sq.ft.	45.89 Sq.m.

UNIT 19 | LEVEL 1 UNIT 20 | LEVEL 2 - 7

SUITE AREA	475.98 Sq.ft.	44.22 Sq.m.
BALCONY AREA	28.09 Sq.ft.	2.61 Sq.m.
TOTAL AREA	504.07 Sq.ft.	46.83 Sq.m.



FLOOR PLAN 1. All dimensions are in imperial and metric, and measured from finish to finish excluding construction tolerances. 2. All materials, dimensions, and drawings are approximate only. 3. Information is subject to change without notice, at developer's absolute discretion. 4. Actual area may vary from the stated area. 5. Drawings not to scale. 6. All images used are for illustrative purposes only and do not represent the actual size, features, specifications, fittings, and furnishings. 7. The developer reserves the right to make revisions / alterations, at it's absolute discretion, without any liability whatsoever.

DUBAI HILLS ESTATE

GOLFVILLE

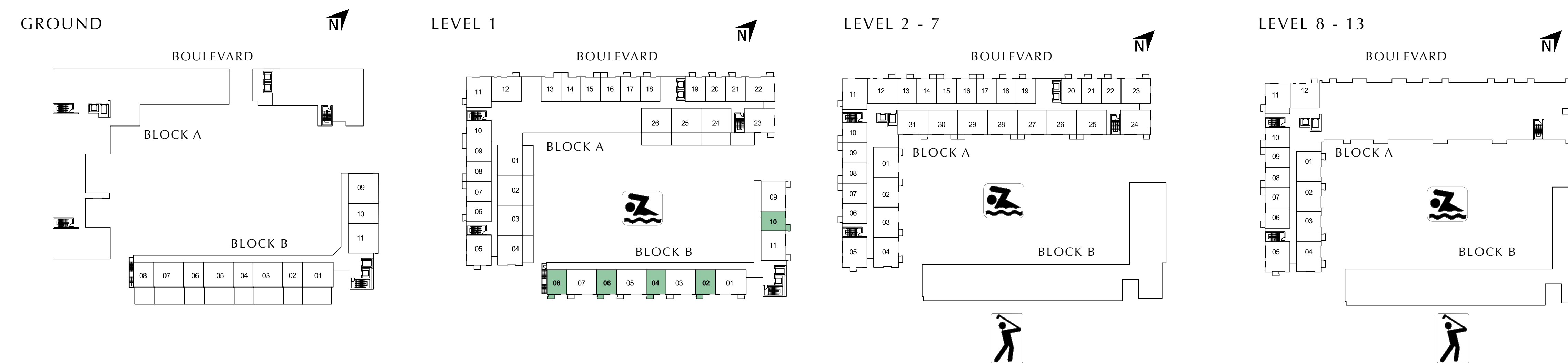
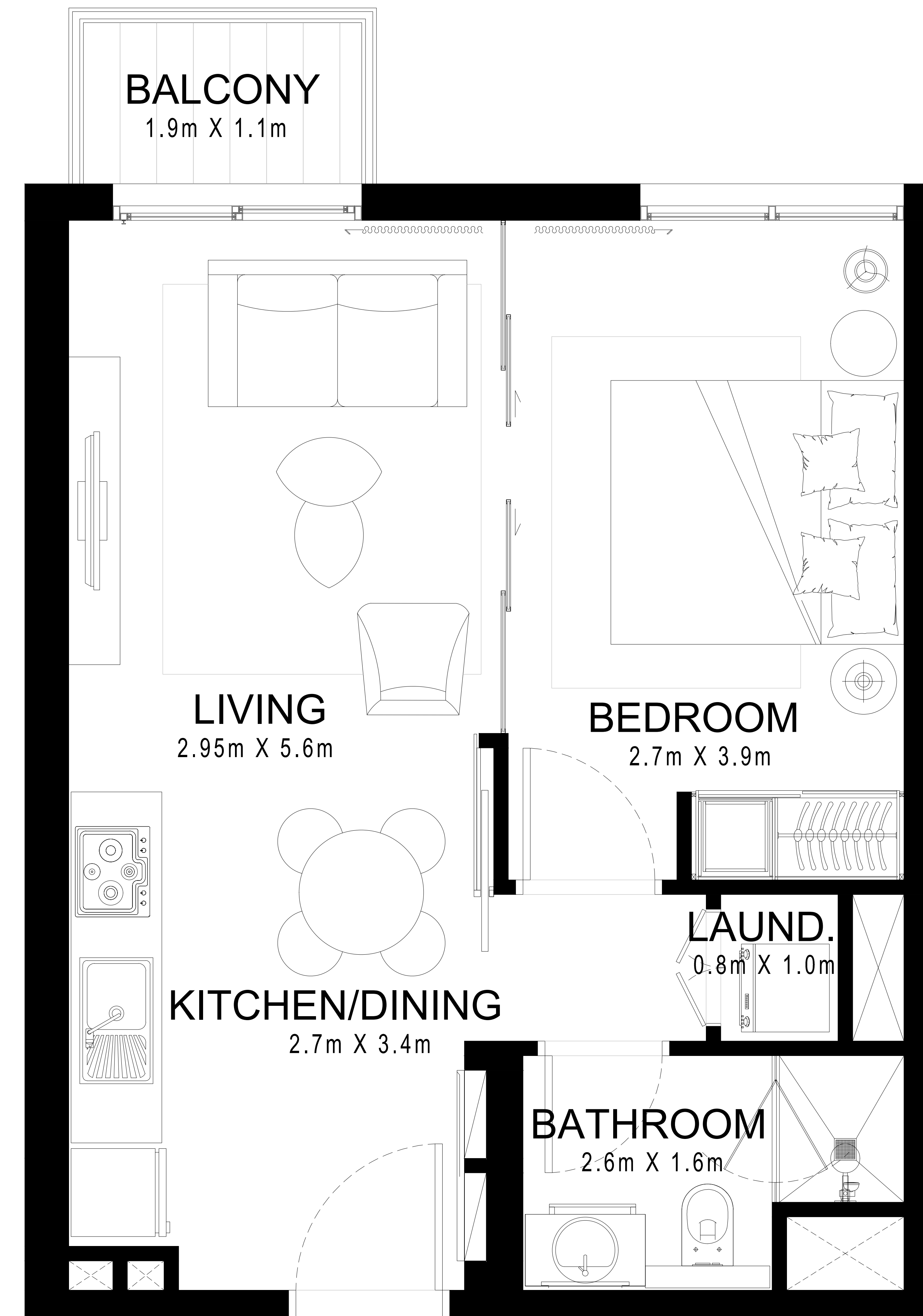
BLOCK B | 1 BEDROOM

UNIT 2, 4, 6, 10 | LEVEL 1

SUITE AREA	465.97 Sq.ft.	43.29 Sq.m.
BALCONY AREA	28.09 Sq.ft.	2.61 Sq.m.
TOTAL AREA	494.06 Sq.ft.	45.90 Sq.m.

UNIT 8 | LEVEL 1

SUITE AREA	467.91 Sq.ft.	43.47 Sq.m.
BALCONY AREA	28.09 Sq.ft.	2.61 Sq.m.
TOTAL AREA	496.00 Sq.ft.	46.08 Sq.m.



FLOOR PLAN 1. All dimensions are in imperial and metric, and measured from finish to finish excluding construction tolerances. 2. All materials, dimensions, and drawings are approximate only. 3. Information is subject to change without notice, at developer's absolute discretion. 4. Actual area may vary from the stated area. 5. Drawings not to scale. 6. All images used are for illustrative purposes only and do not represent the actual size, features, specifications, fittings, and furnishings. 7. The developer reserves the right to make revisions / alterations, at it's absolute discretion, without any liability whatsoever.

DUBAI HILLS ESTATE

GOLFOVILLE

BLOCK B | 1 BEDROOM

UNIT 2 | GROUND

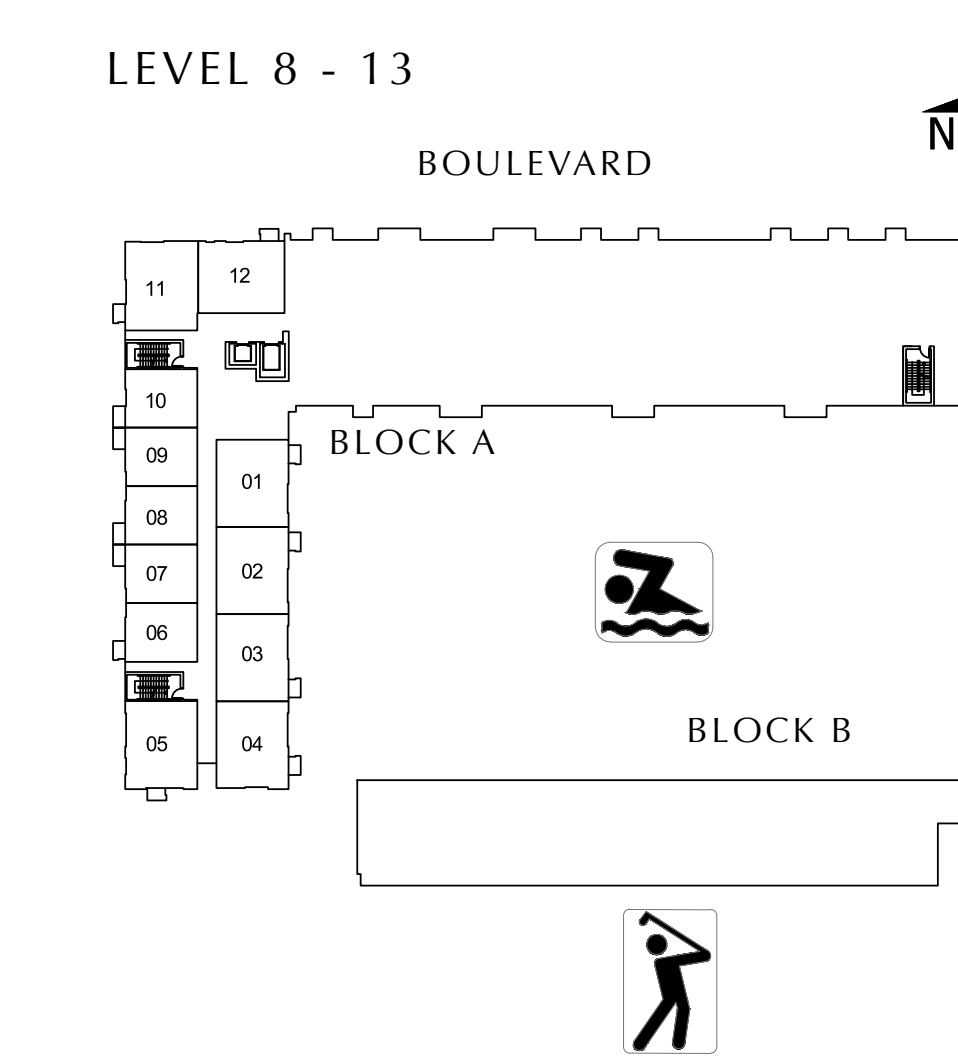
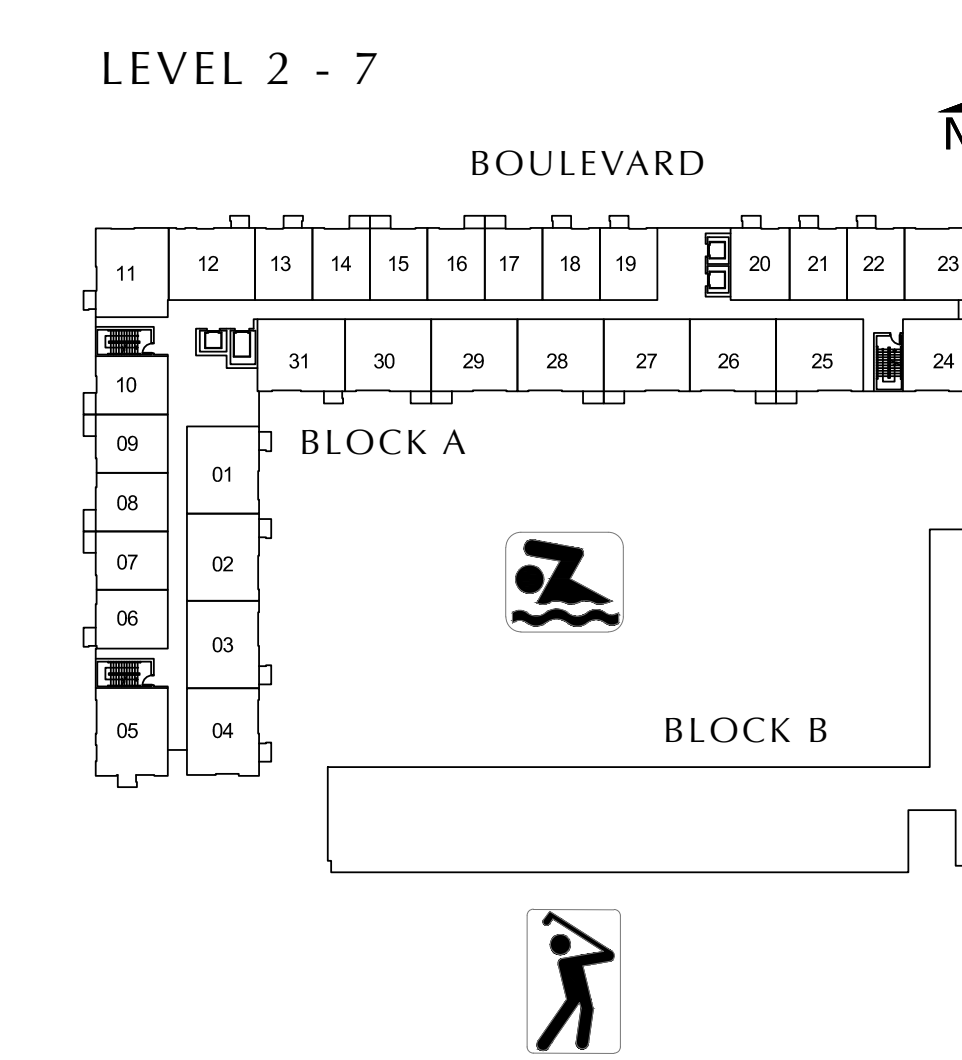
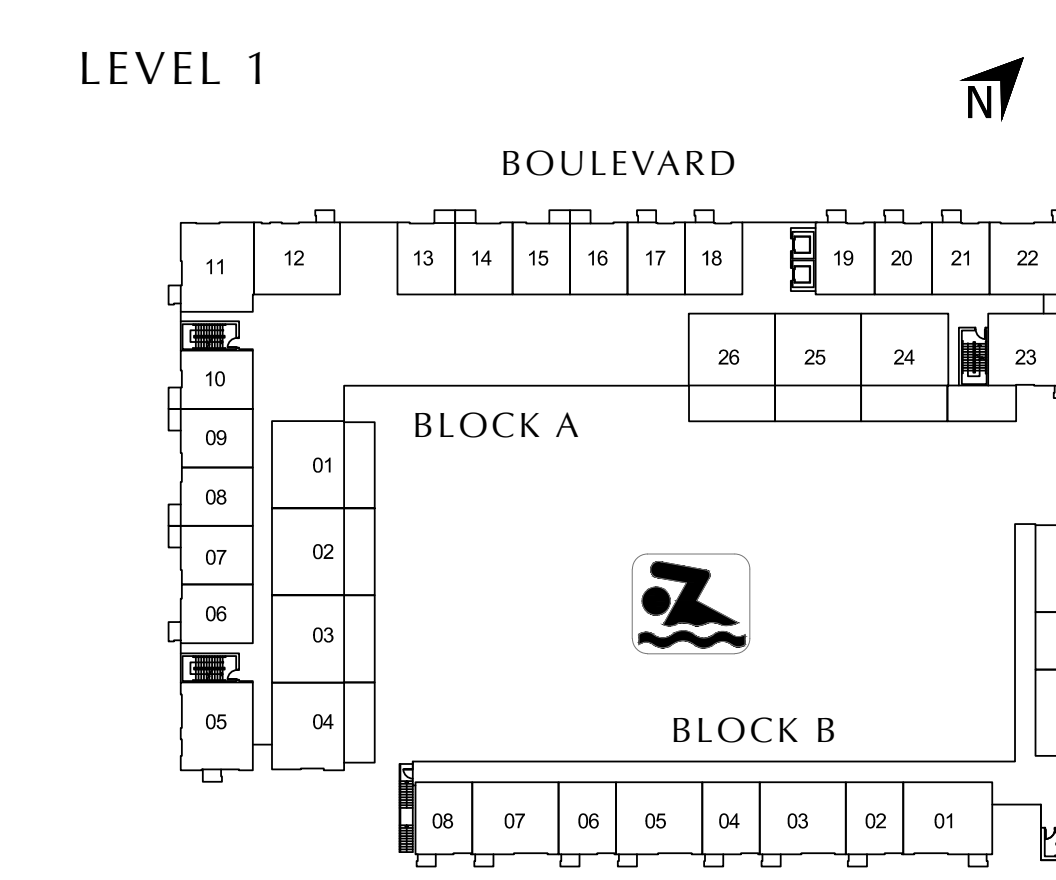
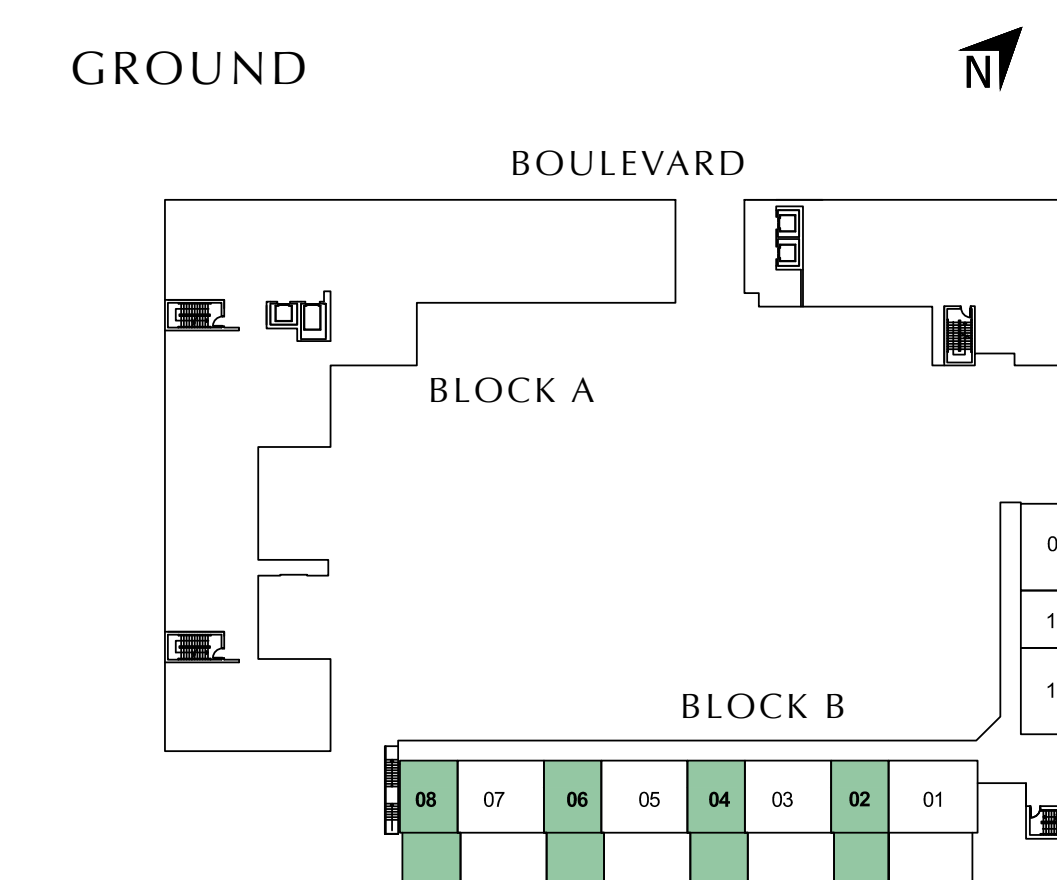
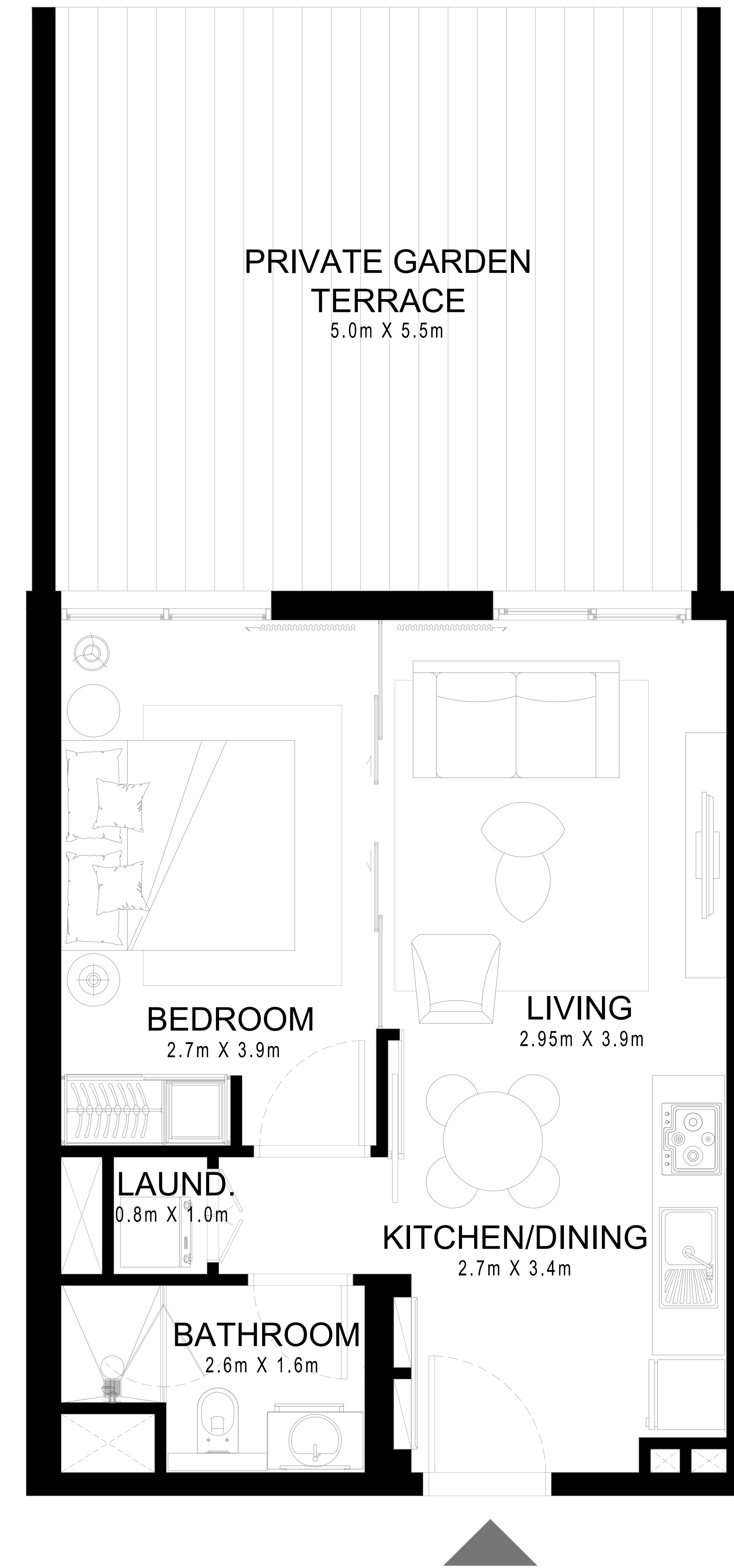
SUITE AREA	465.97 Sq.ft.	43.29 Sq.m.
BALCONY AREA	322.38 Sq.ft.	29.95 Sq.m.
TOTAL AREA	788.35 Sq.ft.	73.24 Sq.m.

UNIT 4, 6 | GROUND

SUITE AREA	465.97 Sq.ft.	43.29 Sq.m.
BALCONY AREA	339.17 Sq.ft.	31.51 Sq.m.
TOTAL AREA	805.14 Sq.ft.	74.80 Sq.m.

UNIT 8 | GROUND

SUITE AREA	467.91 Sq.ft.	43.47 Sq.m.
BALCONY AREA	341.97 Sq.ft.	31.77 Sq.m.
TOTAL AREA	809.88 Sq.ft.	75.24 Sq.m.



FLOOR PLAN 1. All dimensions are in imperial and metric, and measured from finish to finish excluding construction tolerances. 2. All materials, dimensions, and drawings are approximate only. 3. Information is subject to change without notice, at developer's absolute discretion. 4. Actual area may vary from the stated area. 5. Drawings not to scale. 6. All images used are for illustrative purposes only and do not represent the actual size, features, specifications, fittings, and furnishings. 7. The developer reserves the right to make revisions / alterations, at it's absolute discretion, without any liability whatsoever.

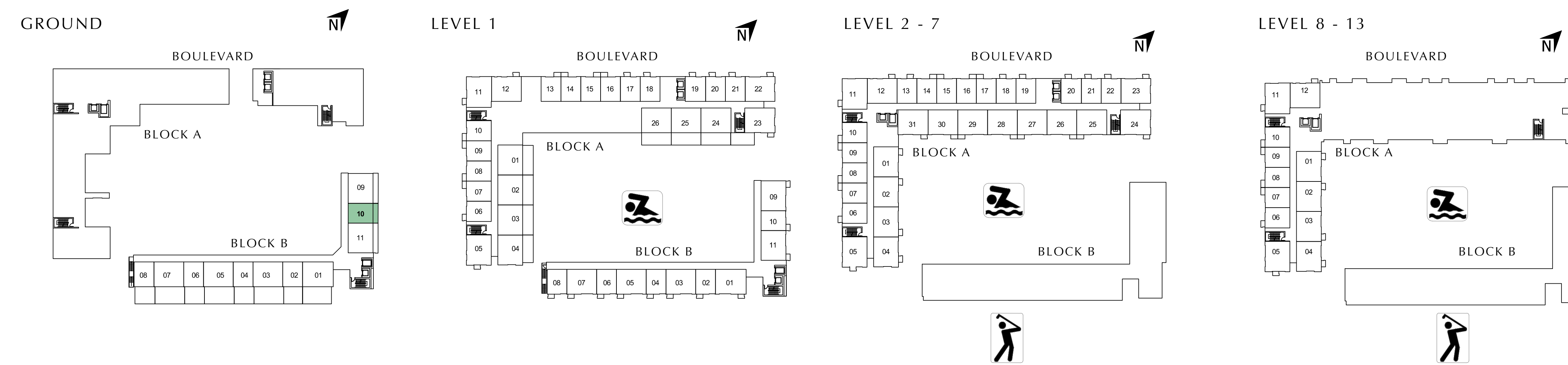
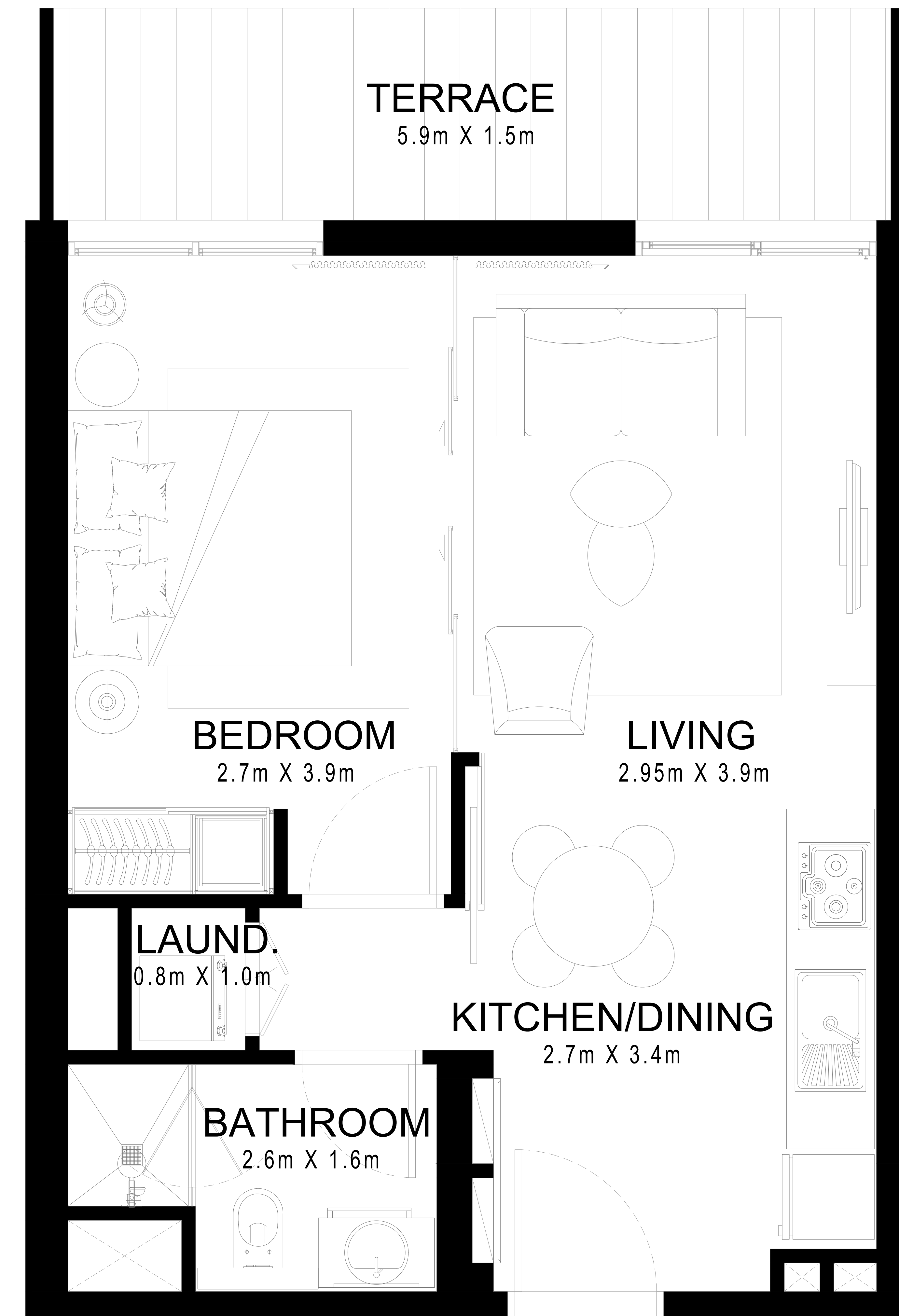
DUBAI HILLS ESTATE

GOLFVILLE

BLOCK B | 1 BEDROOM

UNIT 10 | GROUND

SUITE AREA	465.97 Sq.ft.	43.29 Sq.m.
BALCONY AREA	103.12 Sq.ft.	9.58 Sq.m.
TOTAL AREA	569.09 Sq.ft.	52.87 Sq.m.



FLOOR PLAN 1. All dimensions are in imperial and metric, and measured from finish to finish excluding construction tolerances. 2. All materials, dimensions, and drawings are approximate only. 3. Information is subject to change without notice, at developer's absolute discretion. 4. Actual area may vary from the stated area. 5. Drawings not to scale. 6. All images used are for illustrative purposes only and do not represent the actual size, features, specifications, fittings, and furnishings. 7. The developer reserves the right to make revisions / alterations, at it's absolute discretion, without any liability whatsoever.

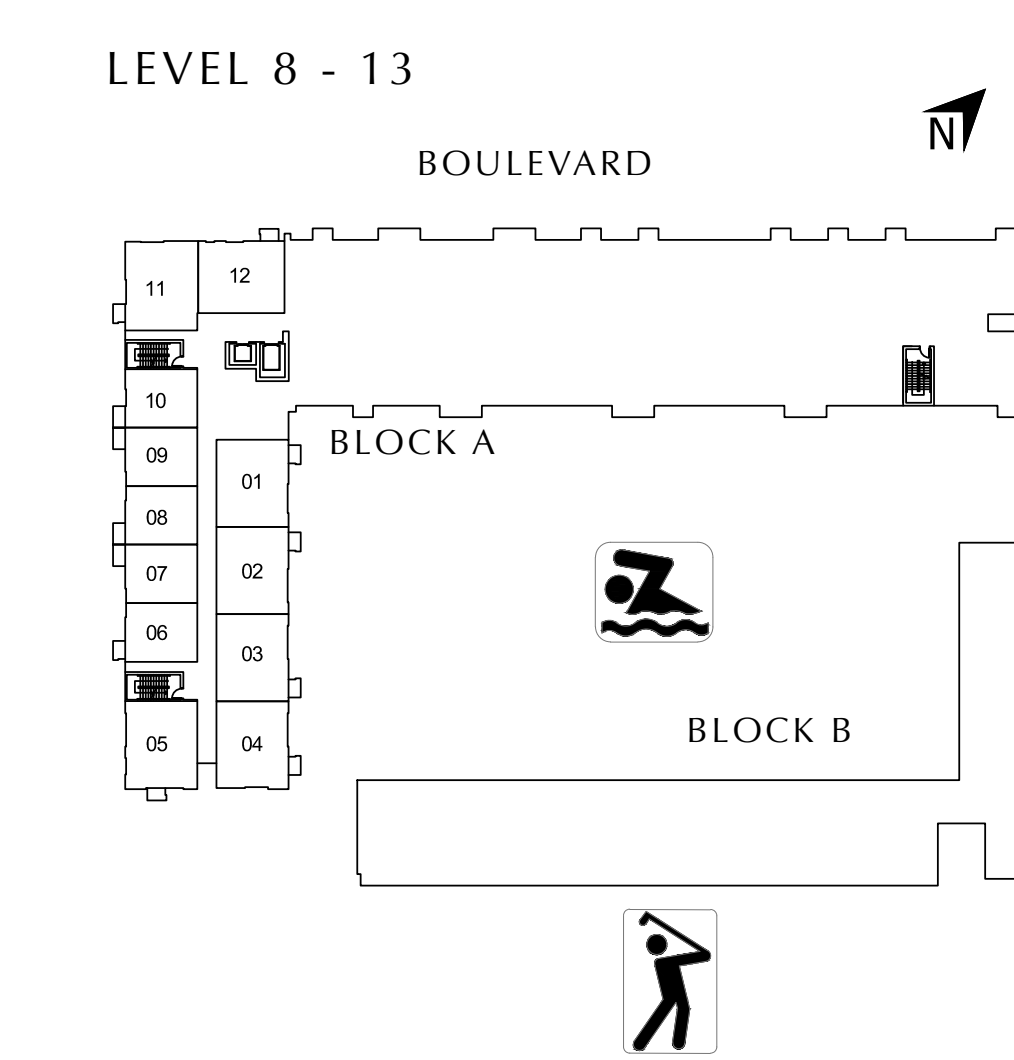
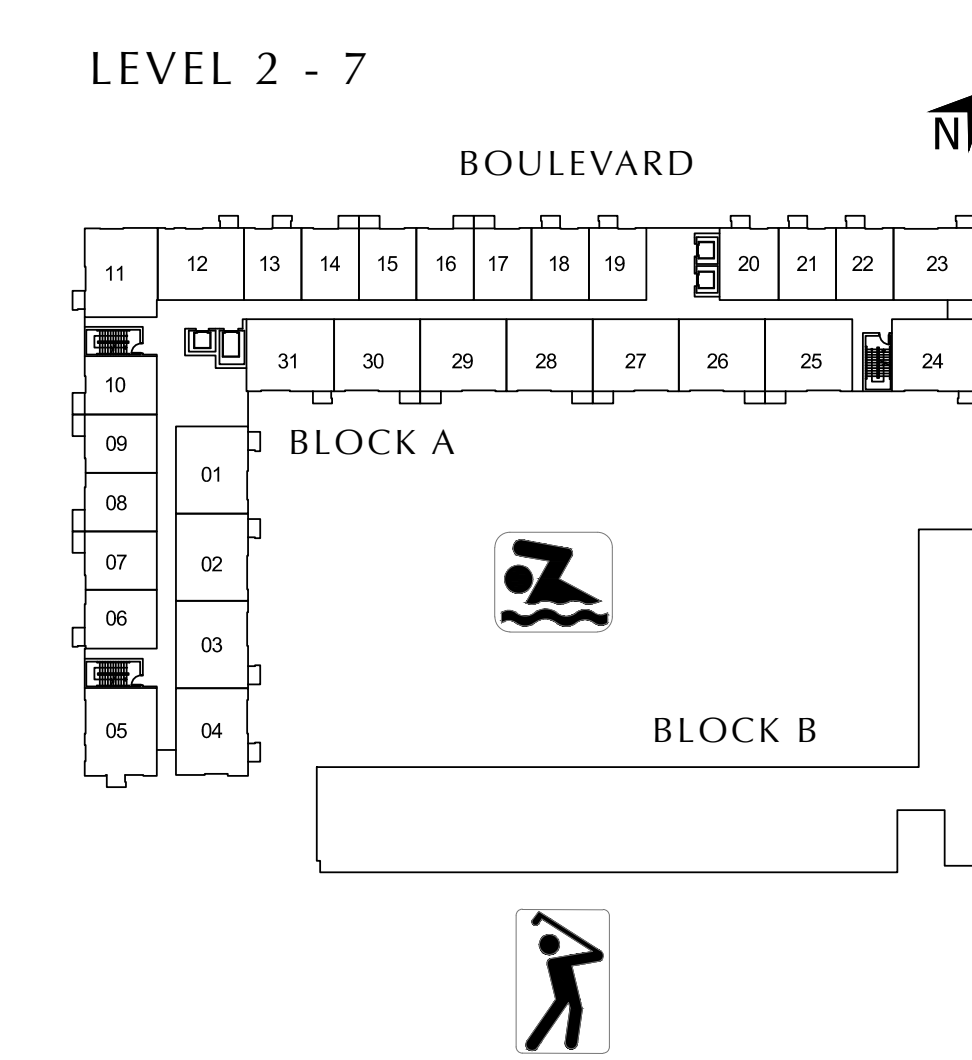
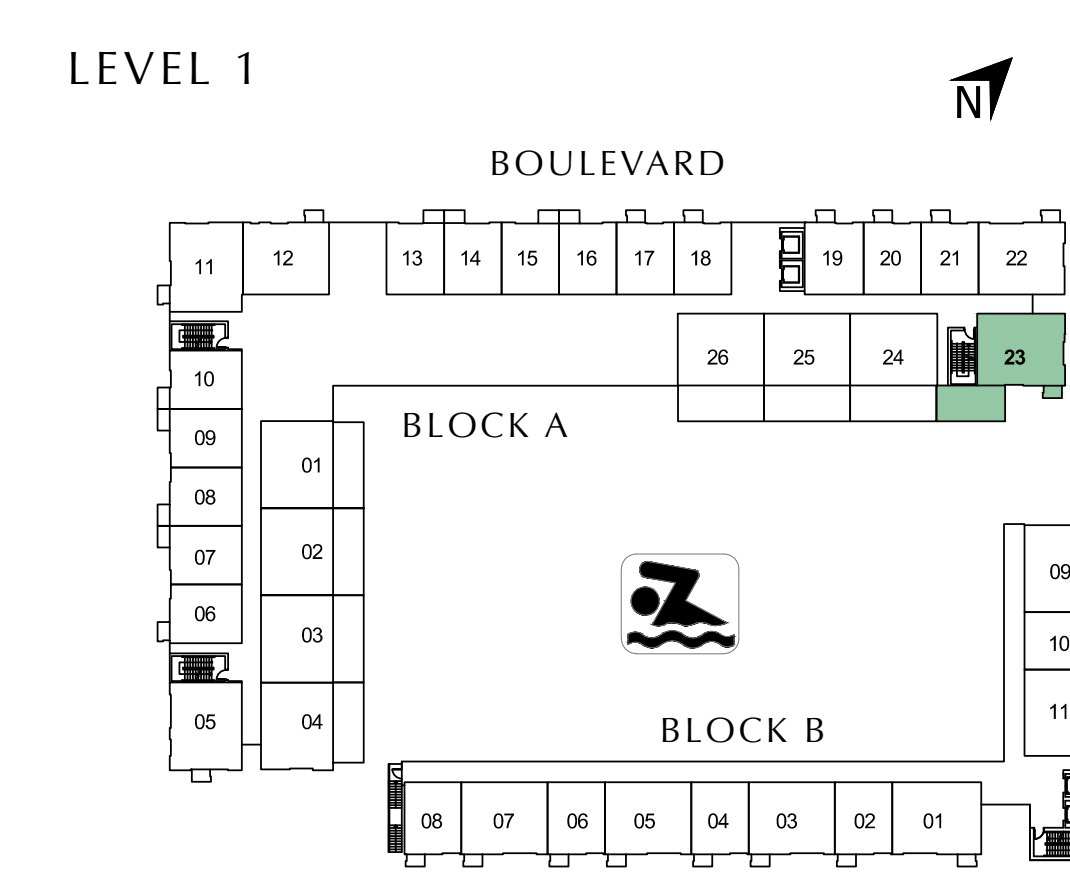
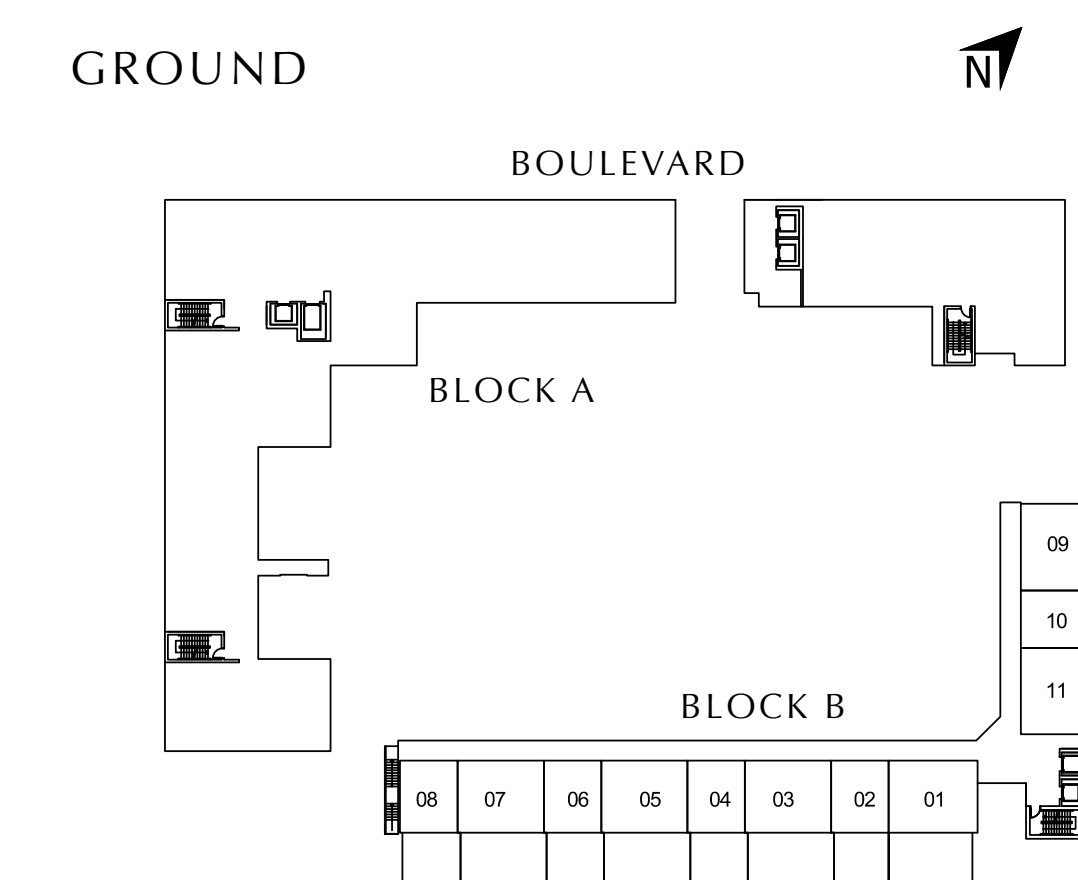
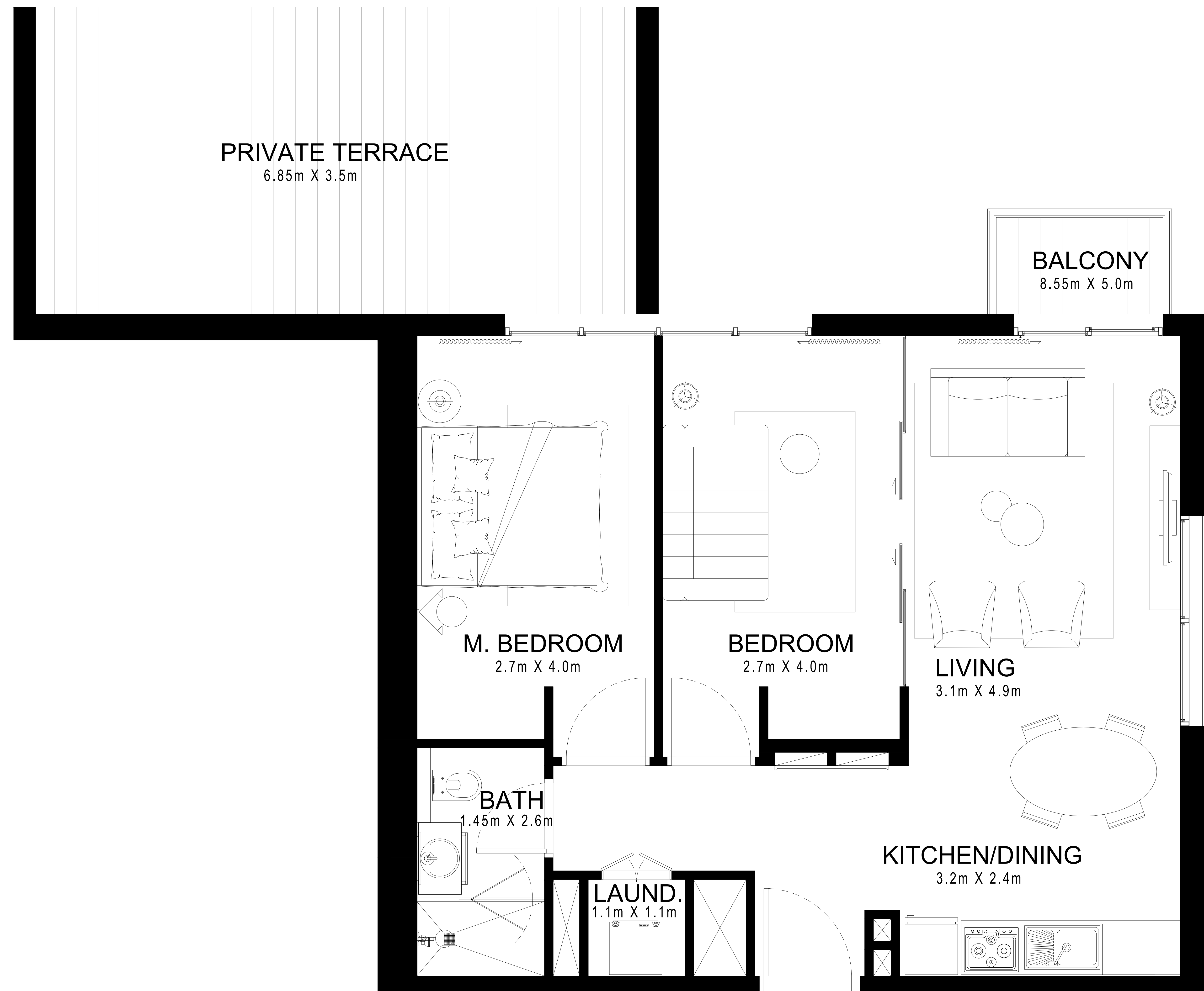
DUBAI HILLS ESTATE

GOLFWILLE

BLOCK A | 2 BEDROOM

UNIT 23 | LEVEL 1

SUITE AREA	712.57 Sq.ft.	66.20 Sq.m.
BALCONY AREA	316.67 Sq.ft.	29.42 Sq.m.
TOTAL AREA	1029.24 Sq.ft.	95.62 Sq.m.



FLOOR PLAN 1. All dimensions are in imperial and metric, and measured from finish to finish excluding construction tolerances. 2. All materials, dimensions, and drawings are approximate only. 3. Information is subject to change without notice, at developer's absolute discretion. 4. Actual area may vary from the stated area. 5. Drawings not to scale. 6. All images used are for illustrative purposes only and do not represent the actual size, features, specifications, fittings, and furnishings. 7. The developer reserves the right to make revisions / alterations, at it's absolute discretion, without any liability whatsoever.

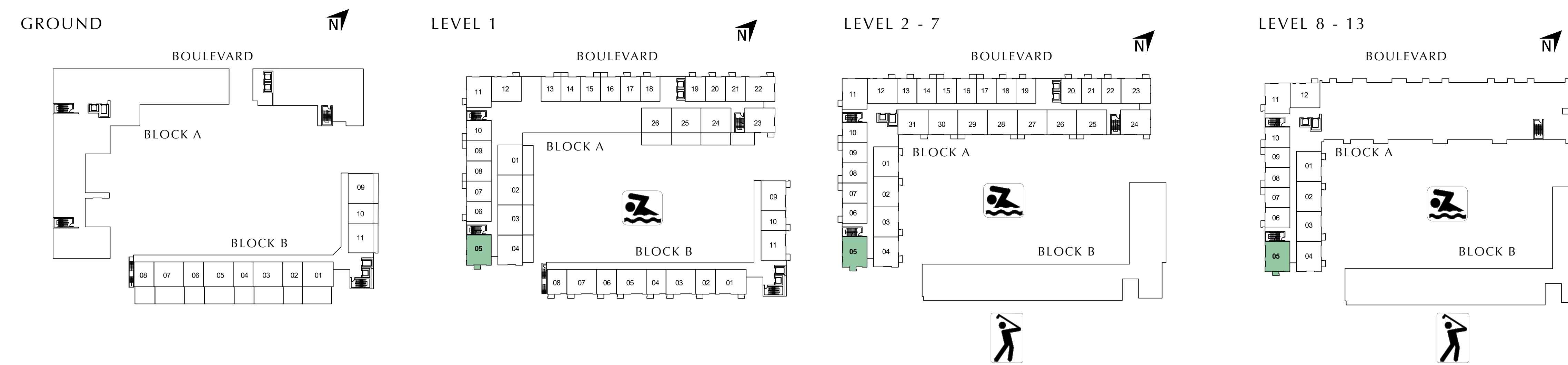
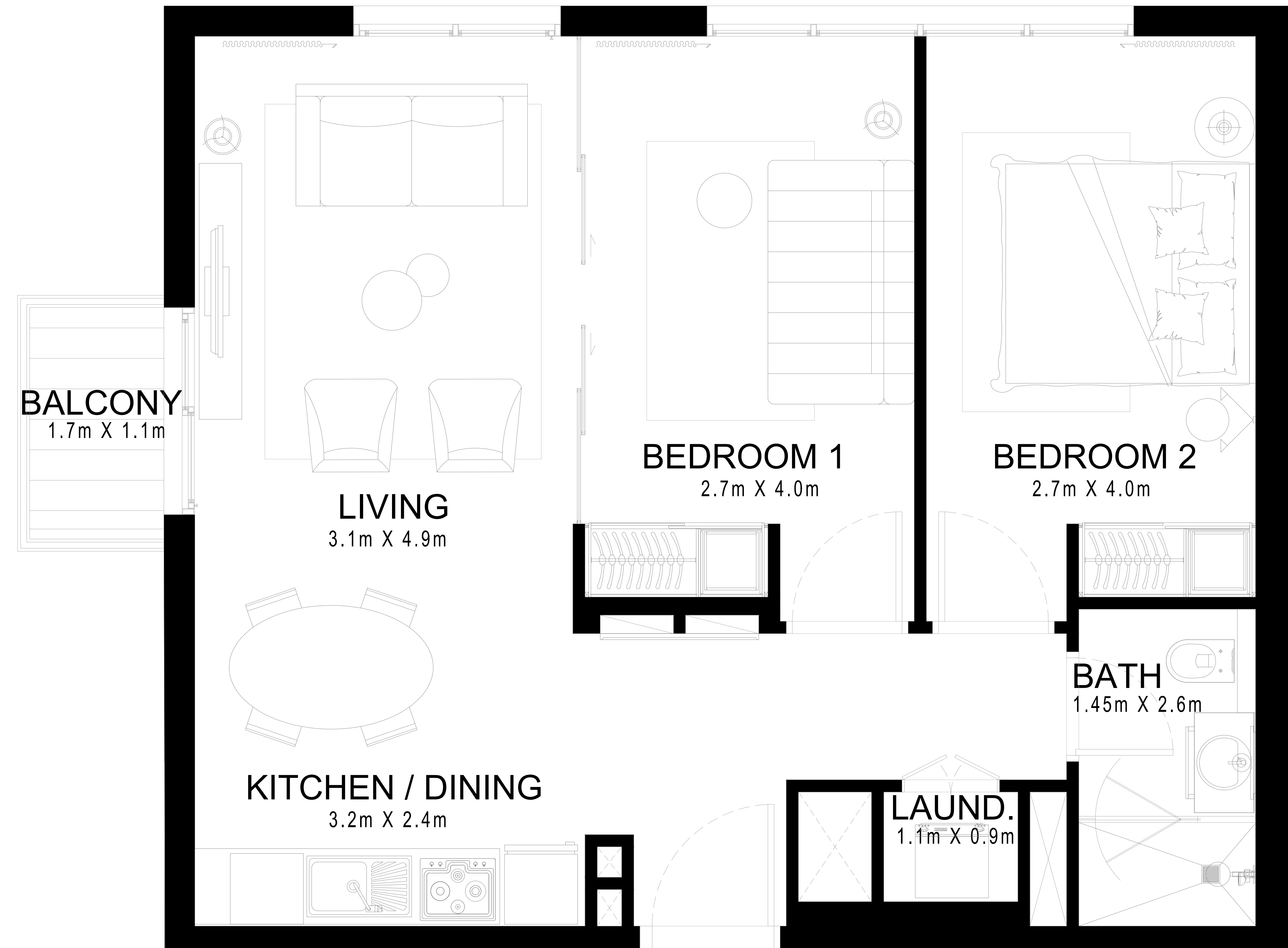
DUBAI HILLS ESTATE

GOLFSVILLE

BLOCK A | 2 BEDROOM

UNIT 5 | LEVEL 1, 2 - 7, 8 - 13

SUITE AREA	712.36 Sq.ft.	66.18 Sq.m.
BALCONY AREA	28.09 Sq.ft.	2.61 Sq.m.
TOTAL AREA	740.45 Sq.ft.	68.79 Sq.m.



FLOOR PLAN 1. All dimensions are in imperial and metric, and measured from finish to finish excluding construction tolerances. 2. All materials, dimensions, and drawings are approximate only. 3. Information is subject to change without notice, at developer's absolute discretion. 4. Actual area may vary from the stated area. 5. Drawings not to scale. 6. All images used are for illustrative purposes only and do not represent the actual size, features, specifications, fittings, and furnishings. 7. The developer reserves the right to make revisions / alterations, at it's absolute discretion, without any liability whatsoever.

DUBAI HILLS ESTATE

GOLFOVILLE

BLOCK A | 2 BEDROOM

UNIT 1 | LEVEL 2 - 7, 8 - 13

SUITE AREA	715.05 Sq.ft.	66.43 Sq.m.
BALCONY AREA	28.09 Sq.ft.	2.61 Sq.m.
TOTAL AREA	743.14 Sq.ft.	69.04 Sq.m.

UNIT 2 | LEVEL 2 - 7, 8 - 13

SUITE AREA	714.51 Sq.ft.	66.38 Sq.m.
BALCONY AREA	28.09 Sq.ft.	2.61 Sq.m.
TOTAL AREA	742.60 Sq.ft.	68.99 Sq.m.

UNIT 3 | LEVEL 2 - 7, 8 - 13

SUITE AREA	716.55 Sq.ft.	66.57 Sq.m.
BALCONY AREA	28.09 Sq.ft.	2.61 Sq.m.
TOTAL AREA	744.64 Sq.ft.	69.18 Sq.m.

UNIT 4 | LEVEL 2 - 7, 8 - 13

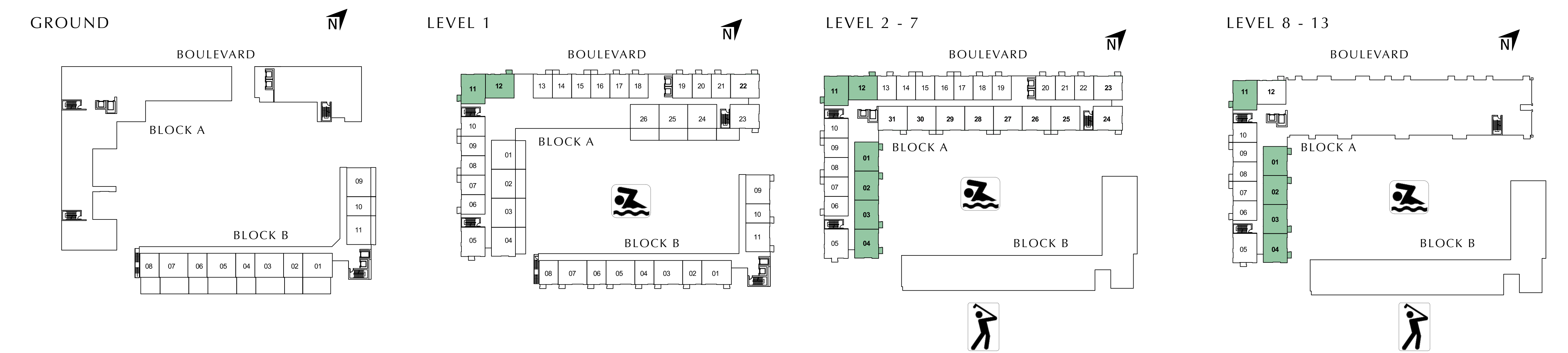
SUITE AREA	709.66 Sq.ft.	65.93 Sq.m.
BALCONY AREA	28.09 Sq.ft.	2.61 Sq.m.
TOTAL AREA	737.75 Sq.ft.	68.54 Sq.m.

UNIT 11 | LEVEL 1, 2 - 7, 8 - 13

SUITE AREA	737.33 Sq.ft.	68.50 Sq.m.
BALCONY AREA	28.09 Sq.ft.	2.61 Sq.m.
TOTAL AREA	765.42 Sq.ft.	71.11 Sq.m.

UNIT 12 | LEVEL 1, 2 - 7

SUITE AREA	707.30 Sq.ft.	65.71 Sq.m.
BALCONY AREA	28.09 Sq.ft.	2.61 Sq.m.
TOTAL AREA	735.39 Sq.ft.	68.32 Sq.m.



FLOOR PLAN 1. All dimensions are in imperial and metric, and measured from finish to finish excluding construction tolerances. 2. All materials, dimensions, and drawings are approximate only. 3. Information is subject to change without notice, at developer's absolute discretion. 4. Actual area may vary from the stated area. 5. Drawings not to scale. 6. All images used are for illustrative purposes only and do not represent the actual size, features, specifications, fittings, and furnishings. 7. The developer reserves the right to make revisions / alterations, at its absolute discretion, without any liability whatsoever.

DUBAI HILLS ESTATE

GOLFOVILLE

BLOCK A | 2 BEDROOM

UNIT 12 | LEVEL 8 - 13

SUITE AREA	719.46 Sq.ft.	66.84 Sq.m.
BALCONY AREA	28.09 Sq.ft.	2.61 Sq.m.
TOTAL AREA	747.55 Sq.ft.	69.45 Sq.m.

UNIT 22 | LEVEL 1 UNIT 23 | LEVEL 2 - 7

SUITE AREA	702.35 Sq.ft.	65.25 Sq.m.
BALCONY AREA	28.09 Sq.ft.	2.61 Sq.m.
TOTAL AREA	730.44 Sq.ft.	67.86 Sq.m.

UNIT 24 | LEVEL 2 - 7

SUITE AREA	712.57 Sq.ft.	66.20 Sq.m.
BALCONY AREA	28.09 Sq.ft.	2.61 Sq.m.
TOTAL AREA	740.66 Sq.ft.	68.81 Sq.m.

UNIT 25 | LEVEL 2 - 7

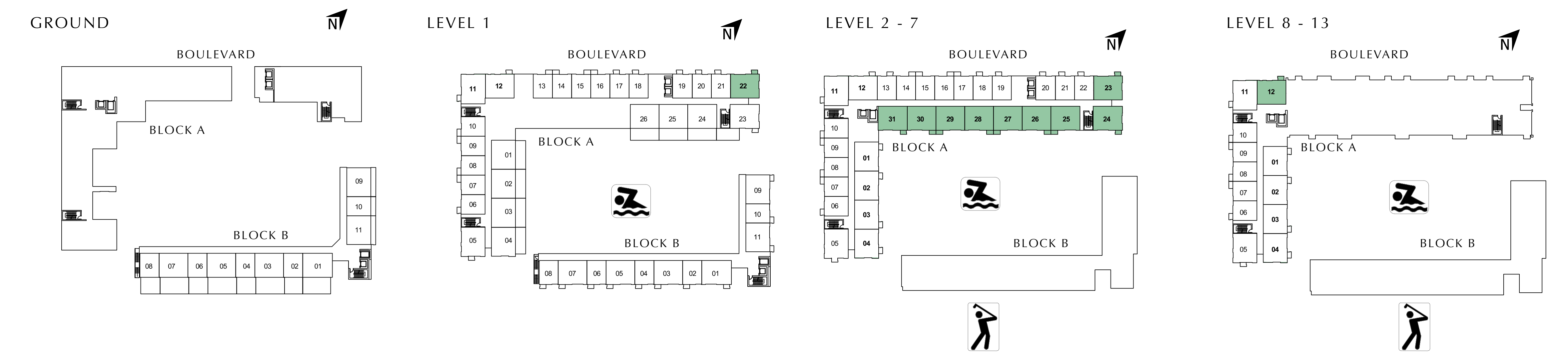
SUITE AREA	714.51 Sq.ft.	66.38 Sq.m.
BALCONY AREA	30.89 Sq.ft.	2.87 Sq.m.
TOTAL AREA	745.40 Sq.ft.	69.25 Sq.m.

UNIT 26, 27, 28, 29, 30 | LEVEL 2 - 7

SUITE AREA	706.44 Sq.ft.	65.63 Sq.m.
BALCONY AREA	30.89 Sq.ft.	2.87 Sq.m.
TOTAL AREA	737.33 Sq.ft.	68.50 Sq.m.

UNIT 31 | LEVEL 2 - 7

SUITE AREA	714.19 Sq.ft.	66.35 Sq.m.
BALCONY AREA	28.09 Sq.ft.	2.61 Sq.m.
TOTAL AREA	742.28 Sq.ft.	68.96 Sq.m.



FLOOR PLAN 1. All dimensions are in imperial and metric, and measured from finish to finish excluding construction tolerances. 2. All materials, dimensions, and drawings are approximate only. 3. Information is subject to change without notice, at developer's absolute discretion. 4. Actual area may vary from the stated area. 5. Drawings not to scale. 6. All images used are for illustrative purposes only and do not represent the actual size, features, specifications, fittings, and furnishings. 7. The developer reserves the right to make revisions / alterations, at it's absolute discretion, without any liability whatsoever.

DUBAI HILLS ESTATE

GOLFSVILLE

BLOCK A | 2 BEDROOM

UNIT 1 | LEVEL 1

SUITE AREA	715.05 Sq.ft.	66.43 Sq.m.
BALCONY AREA	313.77 Sq.ft.	29.15 Sq.m.
TOTAL AREA	1028.82 Sq.ft.	95.58 Sq.m.

UNIT 2 | LEVEL 1

SUITE AREA	714.51 Sq.ft.	66.38 Sq.m.
BALCONY AREA	318.61 Sq.ft.	29.60 Sq.m.
TOTAL AREA	1033.12 Sq.ft.	95.98 Sq.m.

UNIT 3 | LEVEL 1

SUITE AREA	716.55 Sq.ft.	66.57 Sq.m.
BALCONY AREA	318.61 Sq.ft.	29.60 Sq.m.
TOTAL AREA	1035.16 Sq.ft.	96.17 Sq.m.

UNIT 4 | LEVEL 1

SUITE AREA	709.66 Sq.ft.	65.93 Sq.m.
BALCONY AREA	293.64 Sq.ft.	27.28 Sq.m.
TOTAL AREA	1003.30 Sq.ft.	93.21 Sq.m.

UNIT 24 | LEVEL 1

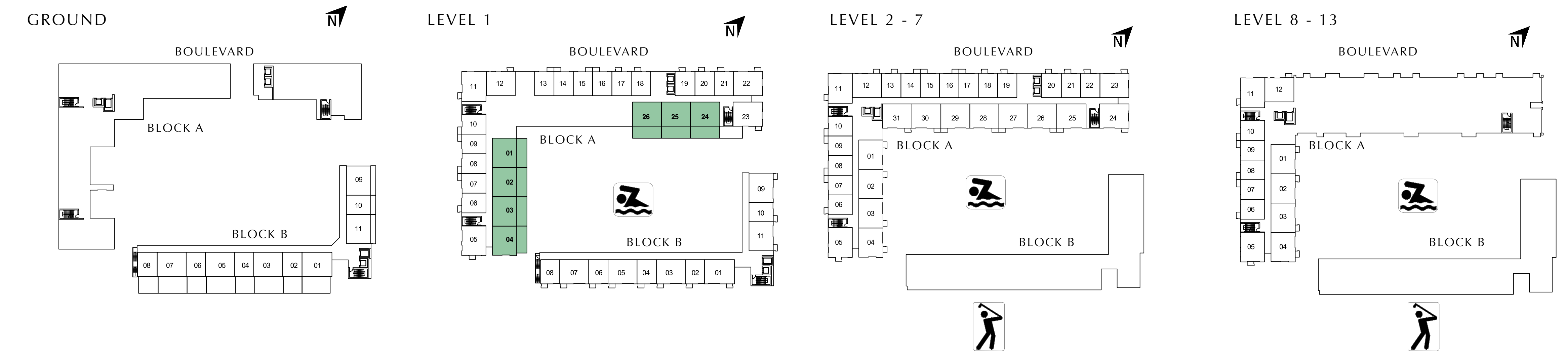
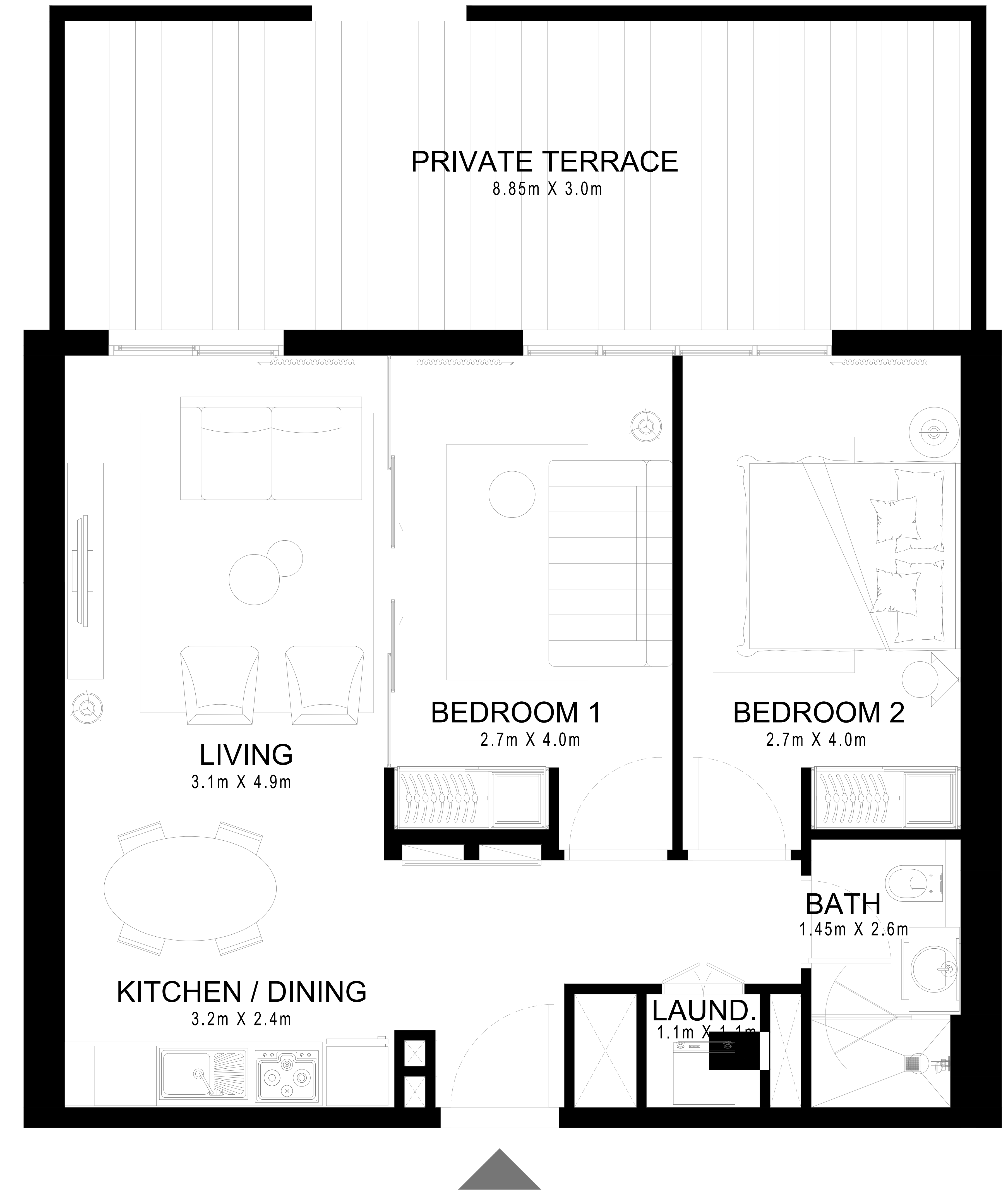
SUITE AREA	714.51 Sq.ft.	66.38 Sq.m.
BALCONY AREA	363.60 Sq.ft.	33.78 Sq.m.
TOTAL AREA	1078.11 Sq.ft.	100.16 Sq.m.

UNIT 25 | LEVEL 1

SUITE AREA	706.44 Sq.ft.	65.63 Sq.m.
BALCONY AREA	363.60 Sq.ft.	33.78 Sq.m.
TOTAL AREA	1070.04 Sq.ft.	99.41 Sq.m.

UNIT 26 | LEVEL 1

SUITE AREA	706.44 Sq.ft.	65.63 Sq.m.
BALCONY AREA	362.53 Sq.ft.	33.68 Sq.m.
TOTAL AREA	1068.97 Sq.ft.	99.31 Sq.m.



FLOOR PLAN 1. All dimensions are in imperial and metric, and measured from finish to finish excluding construction tolerances. 2. All materials, dimensions, and drawings are approximate only. 3. Information is subject to change without notice, at developer's absolute discretion. 4. Actual area may vary from the stated area. 5. Drawings not to scale. 6. All images used are for illustrative purposes only and do not represent the actual size, features, specifications, fittings, and furnishings. 7. The developer reserves the right to make revisions / alterations, at its absolute discretion, without any liability whatsoever.

DUBAI HILLS ESTATE

GOLFSVILLE

BLOCK B | 2 BEDROOM

UNIT 1 | LEVEL 1

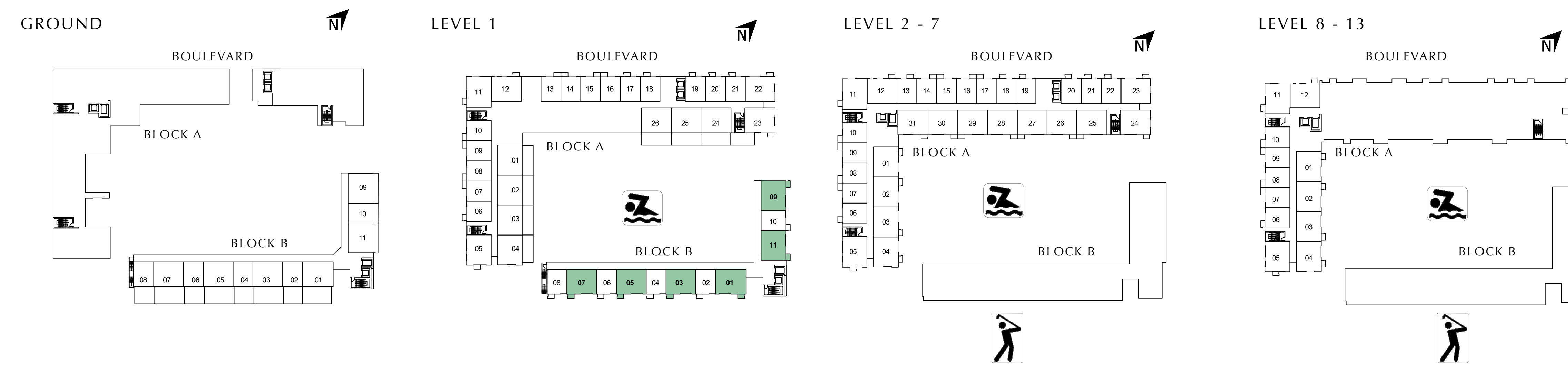
SUITE AREA	728.72 Sq.ft.	67.70 Sq.m.
BALCONY AREA	28.09 Sq.ft.	2.61 Sq.m.
TOTAL AREA	756.81 Sq.ft.	70.31 Sq.m.

UNIT 3, 5, 7, 11 | LEVEL 1

SUITE AREA	706.44 Sq.ft.	65.63 Sq.m.
BALCONY AREA	28.09 Sq.ft.	2.61 Sq.m.
TOTAL AREA	734.53 Sq.ft.	68.24 Sq.m.

UNIT 9 | LEVEL 1

SUITE AREA	712.57 Sq.ft.	66.20 Sq.m.
BALCONY AREA	28.09 Sq.ft.	2.61 Sq.m.
TOTAL AREA	740.66 Sq.ft.	68.81 Sq.m.



FLOOR PLAN 1. All dimensions are in imperial and metric, and measured from finish to finish excluding construction tolerances. 2. All materials, dimensions, and drawings are approximate only. 3. Information is subject to change without notice, at developer's absolute discretion. 4. Actual area may vary from the stated area. 5. Drawings not to scale. 6. All images used are for illustrative purposes only and do not represent the actual size, features, specifications, fittings, and furnishings. 7. The developer reserves the right to make revisions / alterations, at it's absolute discretion, without any liability whatsoever.

DUBAI HILLS ESTATE

GOLFFVILLE

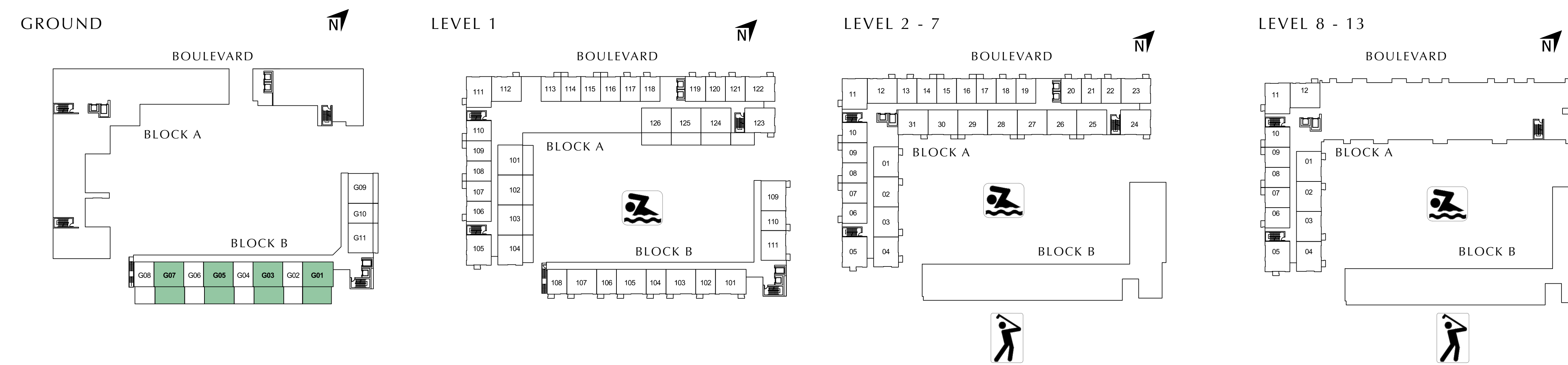
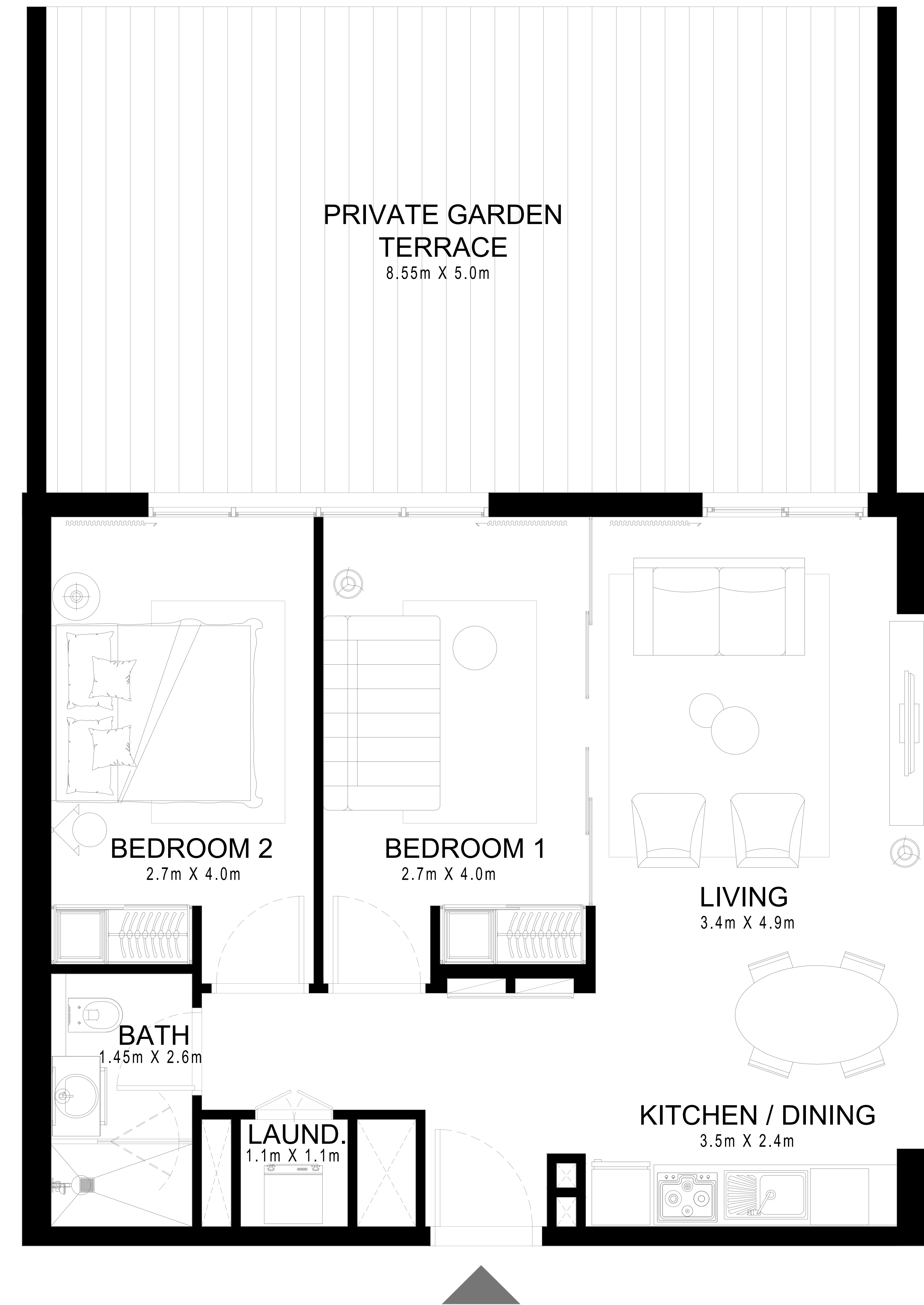
BLOCK B | 2 BEDROOM

UNIT 1 | GROUND

SUITE AREA	728.72 Sq.ft.	67.70 Sq.m.
BALCONY AREA	494.92 Sq.ft.	45.98 Sq.m.
TOTAL AREA	1223.64 Sq.ft.	113.68 Sq.m.

UNIT 3, 5, 7 | GROUND

SUITE AREA	706.44 Sq.ft.	65.63 Sq.m.
BALCONY AREA	508.92 Sq.ft.	47.28 Sq.m.
TOTAL AREA	1215.36 Sq.ft.	112.91 Sq.m.



FLOOR PLAN 1. All dimensions are in imperial and metric, and measured from finish to finish excluding construction tolerances. 2. All materials, dimensions, and drawings are approximate only. 3. Information is subject to change without notice, at developer's absolute discretion. 4. Actual area may vary from the stated area. 5. Drawings not to scale. 6. All images used are for illustrative purposes only and do not represent the actual size, features, specifications, fittings, and furnishings. 7. The developer reserves the right to make revisions / alterations, at it's absolute discretion, without any liability whatsoever.

DUBAI HILLS ESTATE

GOLFOVILLE

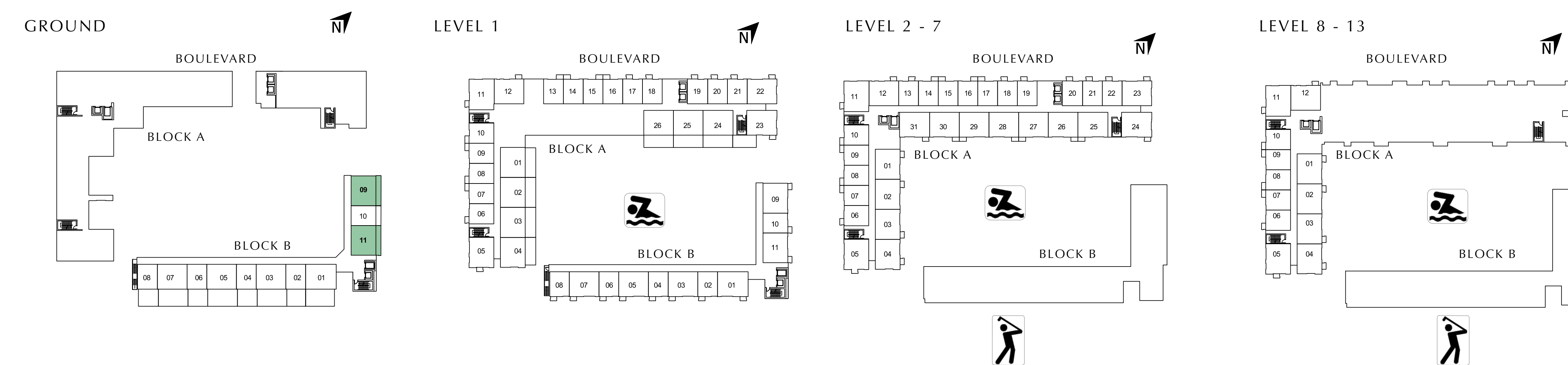
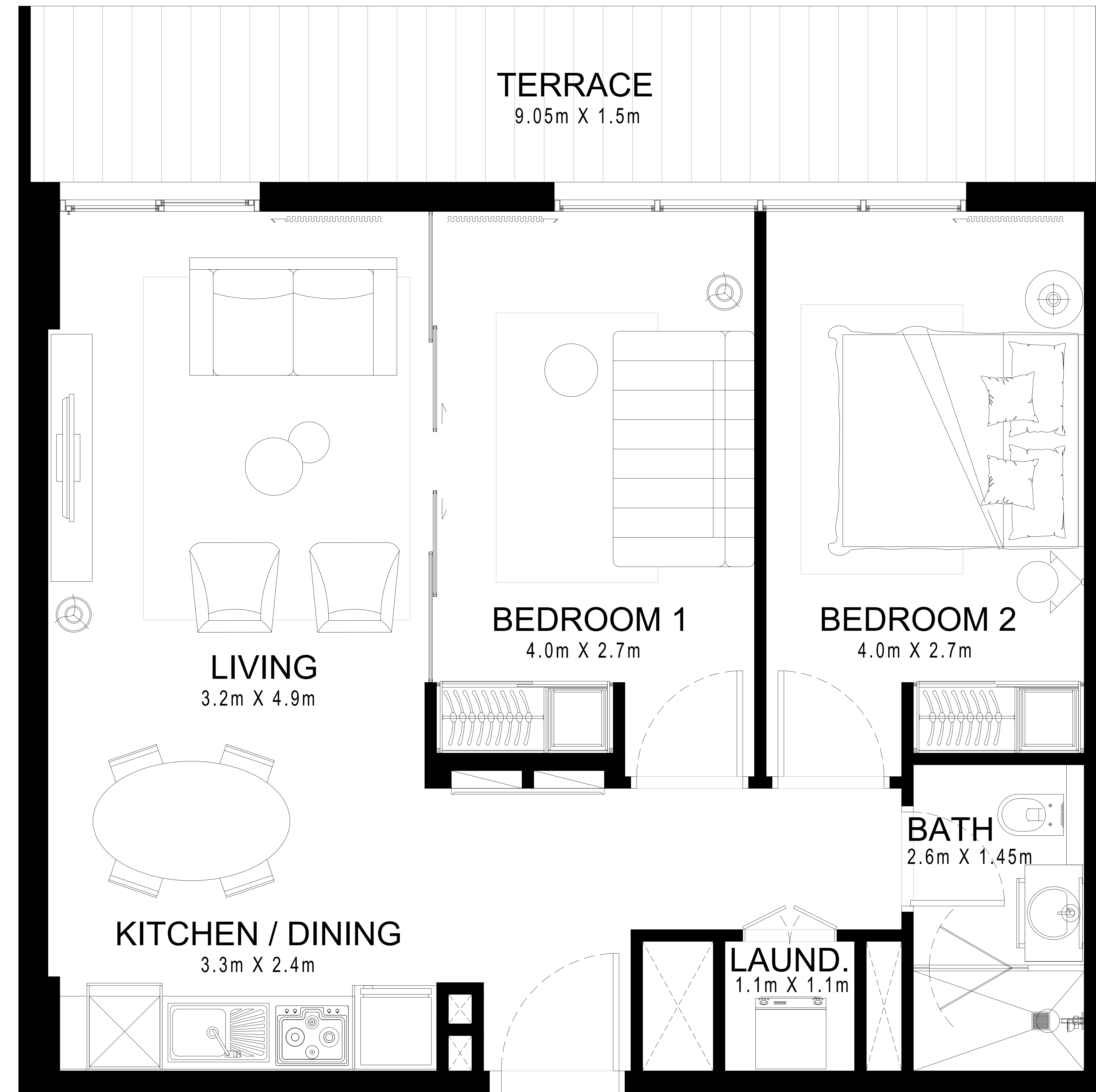
BLOCK B | 2 BEDROOM

UNIT 9 | GROUND

SUITE AREA	712.57 Sq.ft.	66.20 Sq.m.
BALCONY AREA	158.88 Sq.ft.	14.76 Sq.m.
TOTAL AREA	871.45 Sq.ft.	80.96 Sq.m.

UNIT 11 | GROUND

SUITE AREA	706.44 Sq.ft.	65.63 Sq.m.
BALCONY AREA	154.25 Sq.ft.	14.33 Sq.m.
TOTAL AREA	860.69 Sq.ft.	79.96 Sq.m.



FLOOR PLAN 1. All dimensions are in imperial and metric, and measured from finish to finish excluding construction tolerances. 2. All materials, dimensions, and drawings are approximate only. 3. Information is subject to change without notice, at developer's absolute discretion. 4. Actual area may vary from the stated area. 5. Drawings not to scale. 6. All images used are for illustrative purposes only and do not represent the actual size, features, specifications, fittings, and furnishings. 7. The developer reserves the right to make revisions / alterations, at it's absolute discretion, without any liability whatsoever.

For more information on MAJESTIC VISTAS in DUBAI HILLS ESTATE,
please call 800 36227 (UAE) / +971 4 366 1688 (international)
or talk to our Property Advisor directly at +971 4888 8844 from 9AM to 7PM (GSP), Sunday to Thursday.

Visit our online sales centre at emaar.com or any of our Sales Centres across the UAE.

DUBAI

Emaar Sales Centre | Downtown Dubai

Dubai Hills Estate Sales Pavilion | Umm Suqeim Road

Dubai Creek Harbour Sales Pavilion | Ras Al Khor

Emaar South Sales Centre | DWC Peripheral Road

ABU DHABI

Emaar Sales Centre | Al Nahda Tower, Ground Floor, 4th Street, Corniche, Al Muroor Road

9:30 a.m. to 7 p.m. Saturday - Thursday

Friday from 2:00 p.m. to 7:00 p.m. (all locations except the Abu Dhabi Sales Centre)

EMAAR